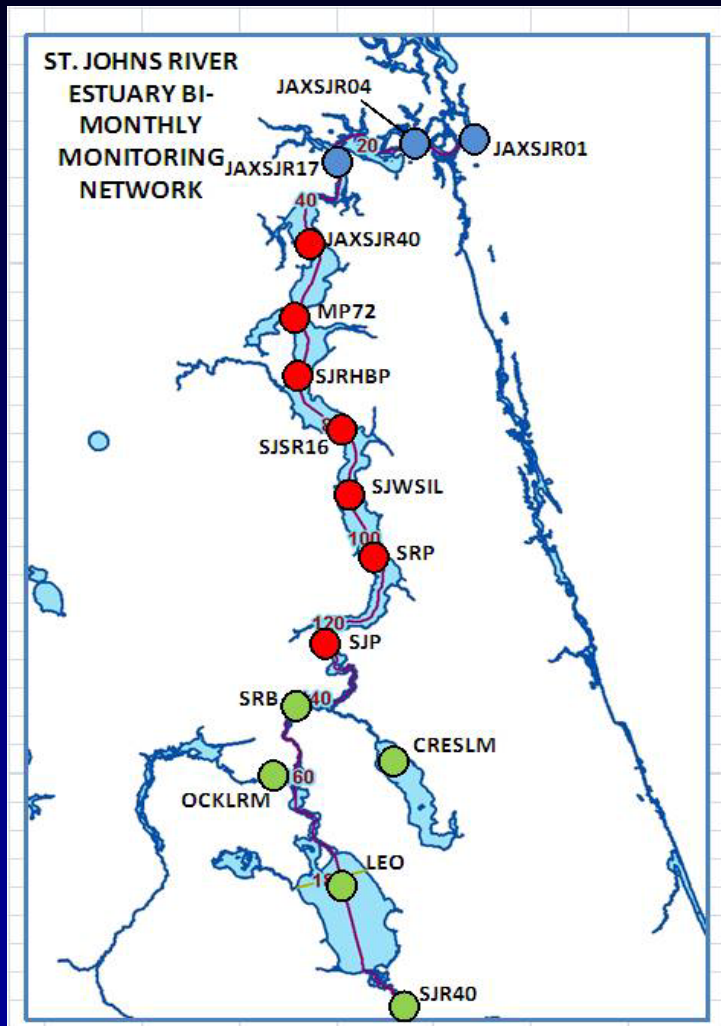
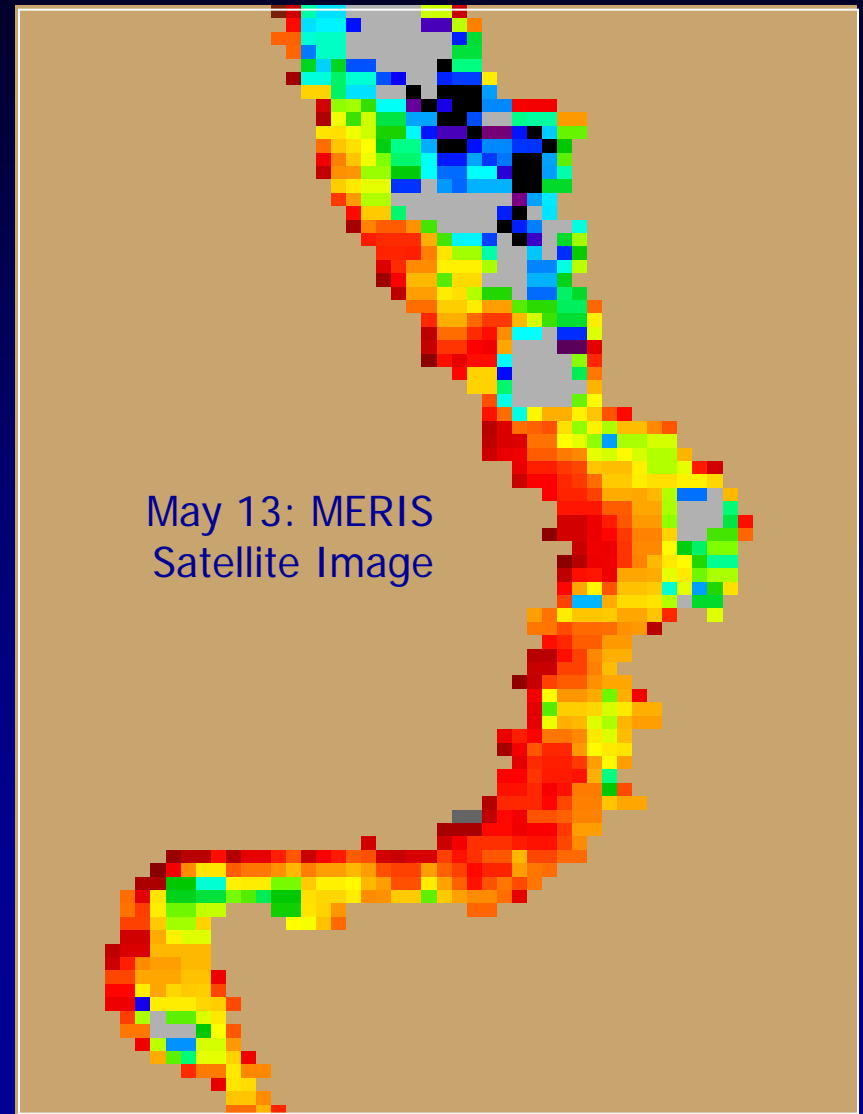
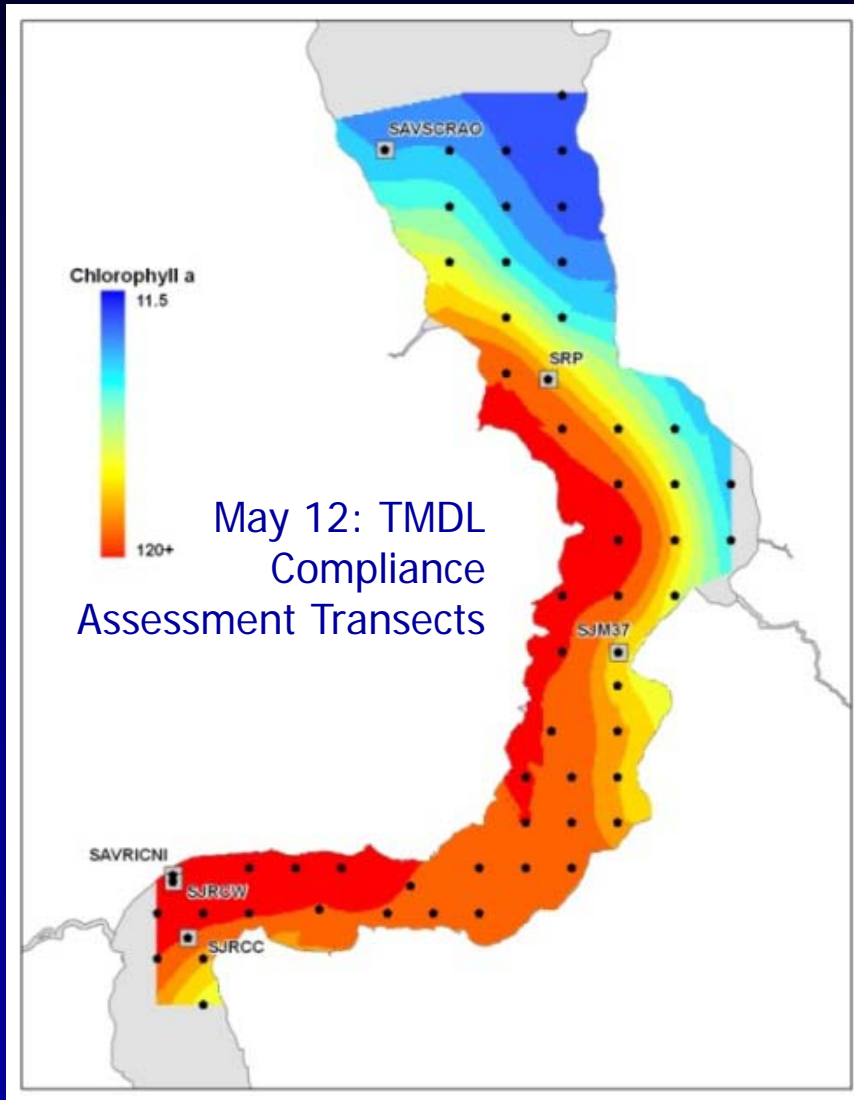


SJRWMD Surface WQ Monitoring Summary

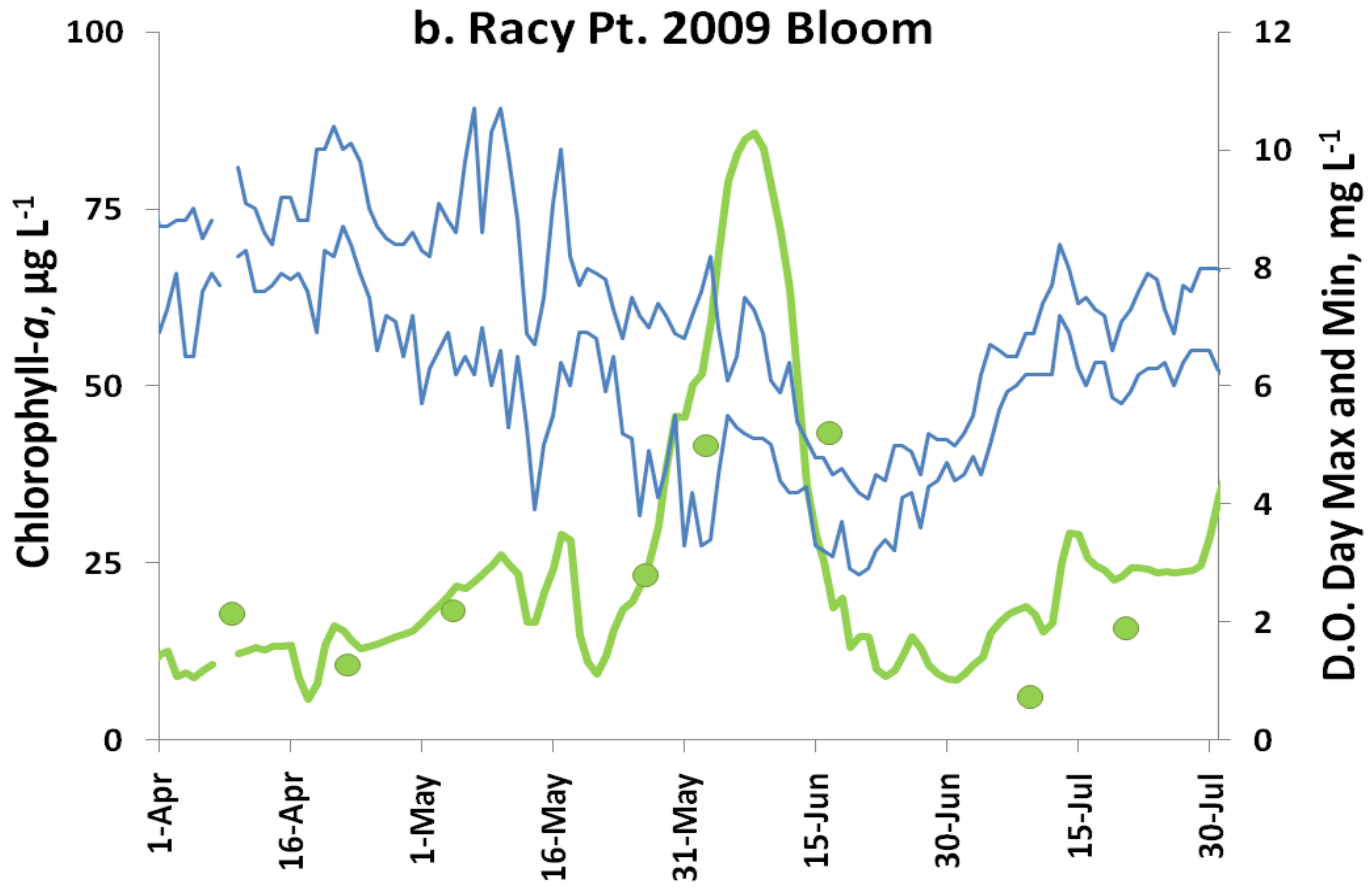


- River Mainstem Ambient
 - Plankton, cyanotoxins, recon
 - Continuous (USGS and Others)
- River Littoral/Near Shore
- Major Inflows (External Load)
 - BMAP Storm Events
 - TCAA, Dairy Major Tribs
 - Point Source: DMRs
 - Major Boundaries
- Process/Performance Assmt.
 - RST Performance
 - River Intensive
 - Ocklawaha Patterns

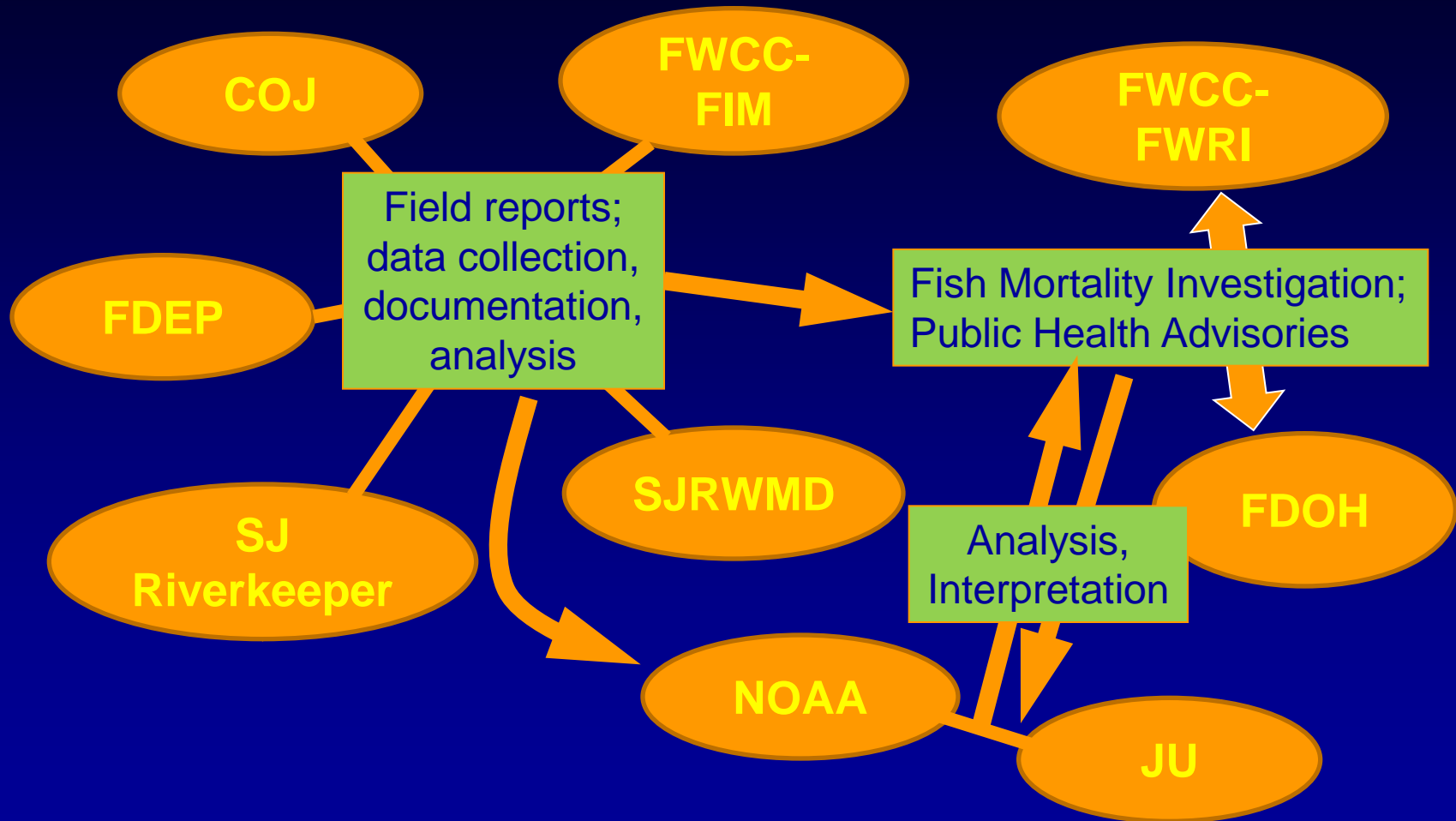
New Tools: NOAA MERIS Satellite Interpretation



New Tools: Continuous Monitoring



Interagency Roles and Coordination*



*Action plan established in *Resource Guide for Public Health Response to Harmful Algal Blooms in Florida, 2009*

Refinements and Attention Needs?

- TMDL BMAP Monitoring
 - Monitoring in place; need for comprehensive re-appraisal
- Bio-Eco Interactions in the Oligohaline
 - More complete microbial ecology needed
- Linkages
 - Are we connecting the dots between external load, WQ, habitat, aquatic fauna and people, and between do-ers and decision-makers
- Information Dissemination
 - Best media options; stewardship & QA